



[STUDIO GALLERIES]



OLD
GRANADA
STUDIOS

ENTERPRISE CITY®

WORK, STAY AND PLAY

The cultural hub of
Enterprise City.



**AN ICONIC
BUILDING...**



**...A BOLD NEW
STATEMENT**

**A true Manchester
landmark brimming with
heritage and history.**

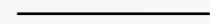
Original Granada TV HQ building, image ©ITV Granada.

— EST 1954 —





Proudly home to



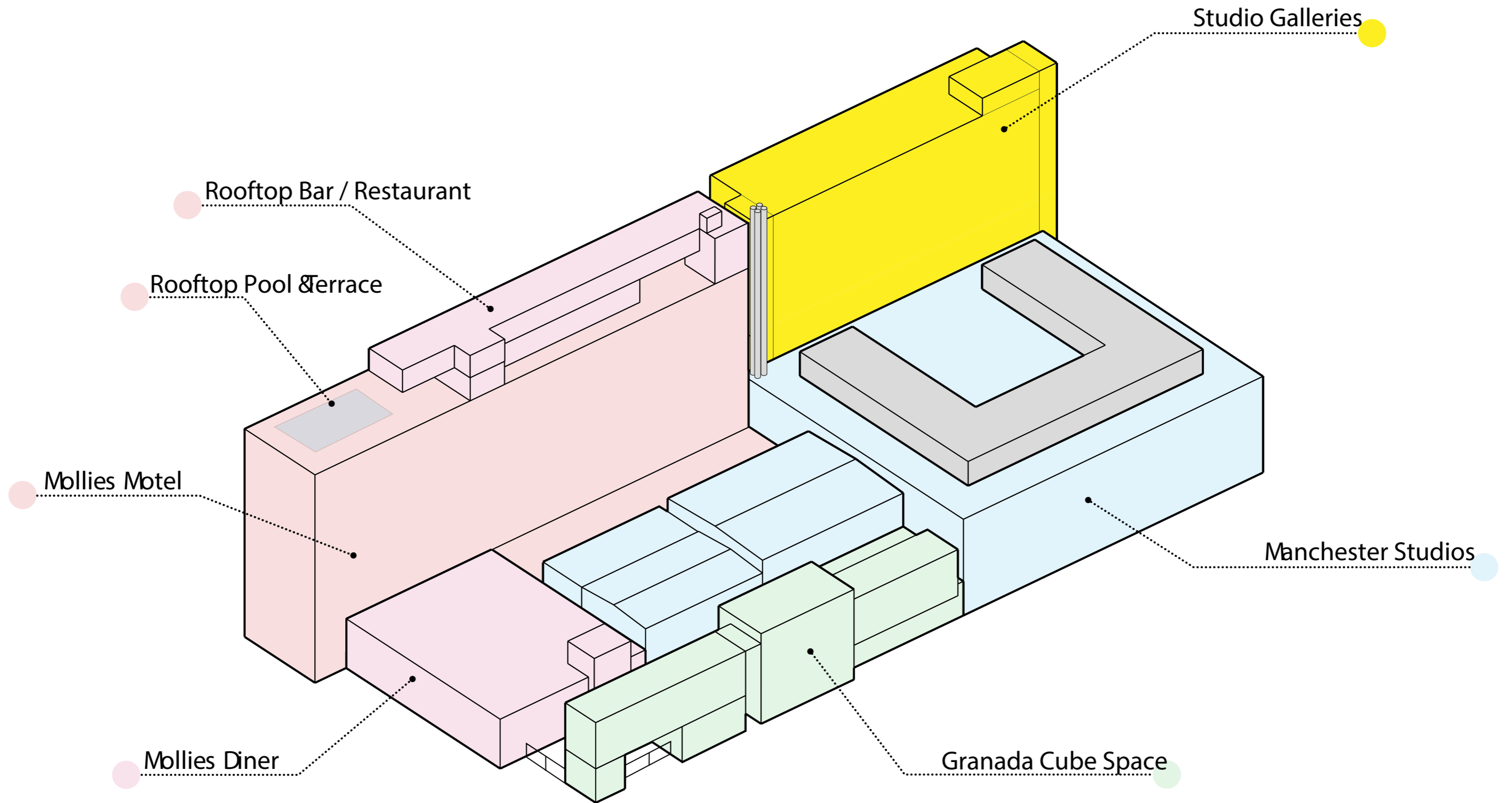
SOHO HOUSE

MOLLIE'S MOTEL

STUDIO GALLERIES

MANCHESTER STUDIOS

GRANADA CUBE SPACE



[STUDIO GALLERIES]



[STUDIO **GALLERIES**]

Creative spaces for modern working, spaces for modern socialising. Places of collaboration and innovation, from flexible floors to start-up studios, imagine a place that challenges your perceptions of the workplace.
It's working at OGS.

DESIGN

WORKSPACE DESIGN

Old Granada Studios is a historic and iconic piece of architecture. The legacy of filming at the studios will be continued and the OGS workspace provides a new innovative way of working.

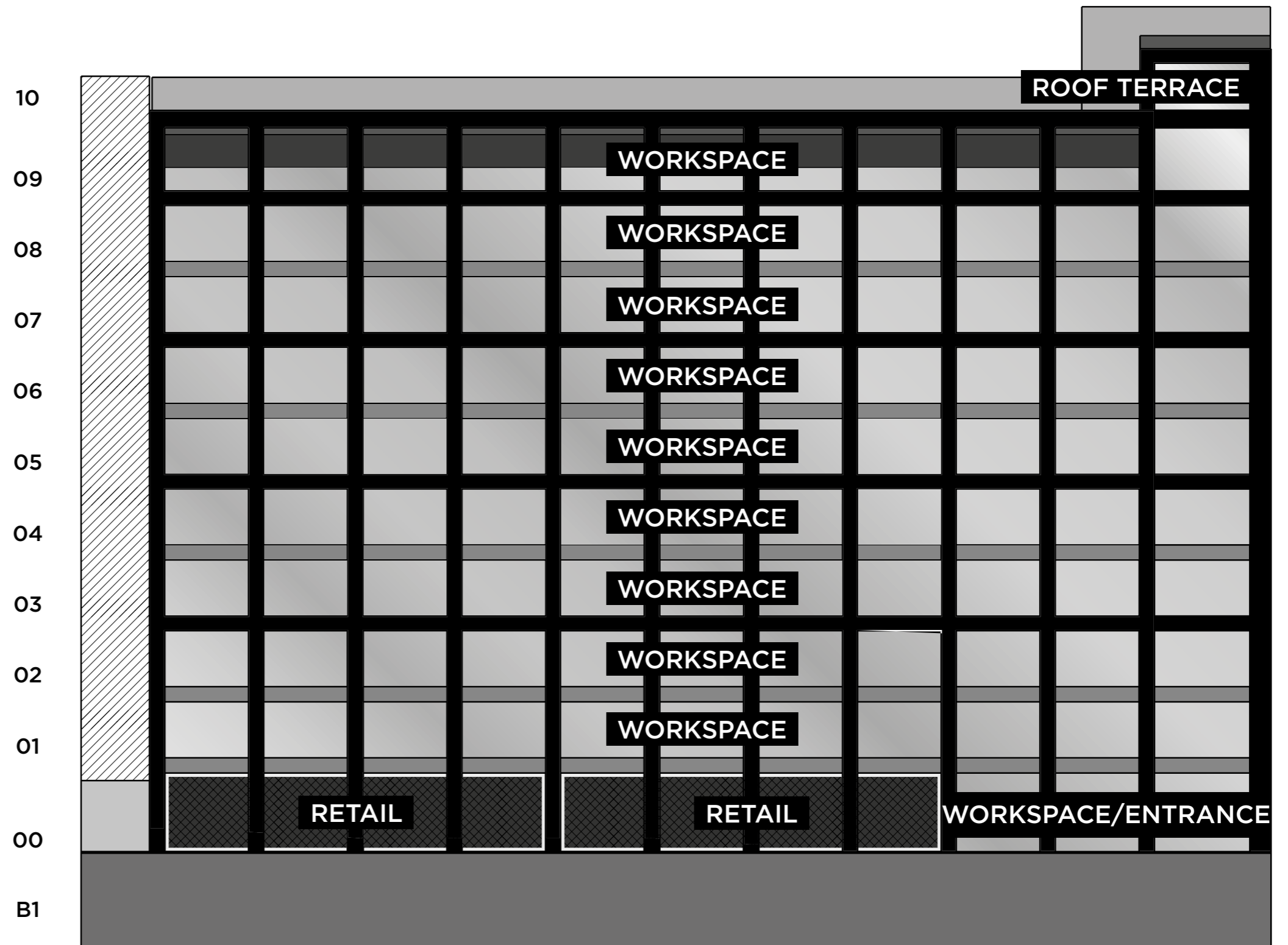
Double-height workspace 'Gallery' spaces connected to create light and airy environments. Inspired by sci-fi cinema, technology and the environment to create a space that is clean, fresh and innovative.





Artistic impression of typical workspace entrance.

FLOOR STACKER



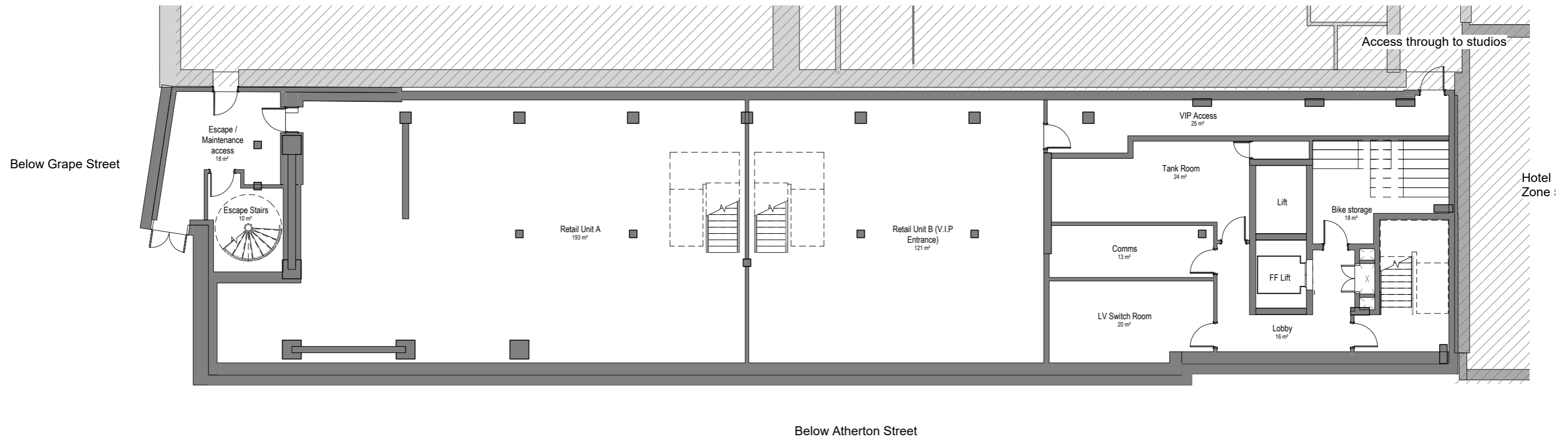
AREA SCHEDULE

LEVEL	USE	NIA (SQ M)	NIA (SQ FT)
BASEMENT	RETAIL SPACES A & B	A: 192 B: 139	A: 2,060 B: 1,500
GROUND	RETAIL SPACES A & B	A: 157 B: 120	A: 1,690 B: 1,290
LEVEL ONE	WORKSPACE	499	5,370
LEVEL TWO	WORKSPACE	499	5,370
LEVEL THREE	WORKSPACE	482	5,180
LEVEL FOUR	WORKSPACE	493	5,300
LEVEL FIVE	WORKSPACE	493	5,300
LEVEL SIX	WORKSPACE	493	5,300
LEVEL SEVEN	WORKSPACE	493	5,300
LEVEL EIGHT	WORKSPACE	493	5,300
LEVEL NINE	WORKSPACE	416	4,470
LEVEL TEN	TERRACE / AMENITY	n/a	n/a

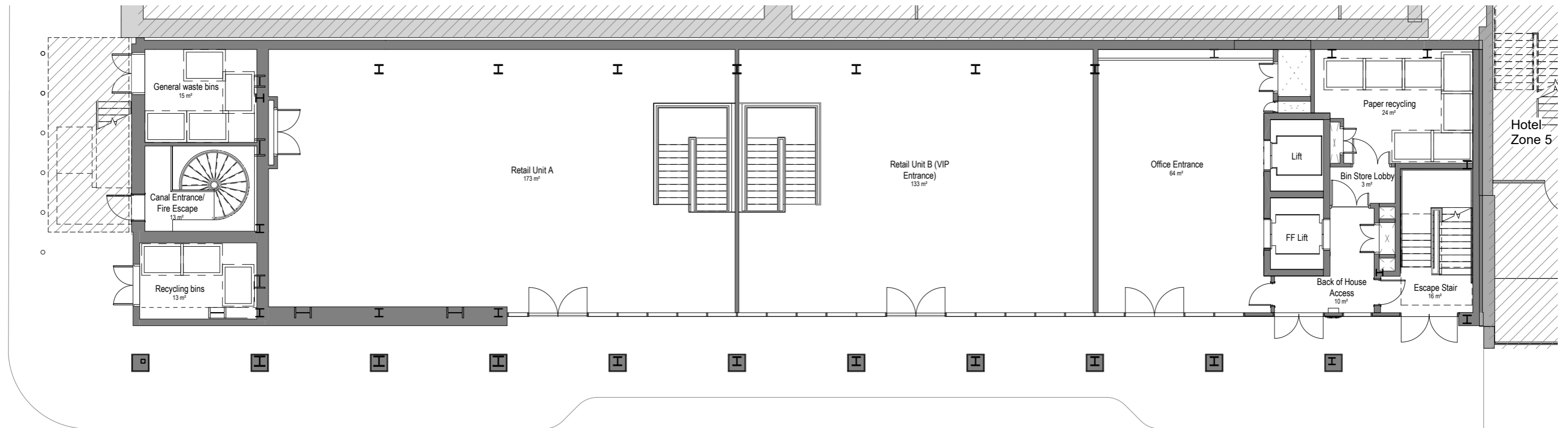
FLOOR PLANS

BASEMENT TO LEVEL TEN

BASEMENT

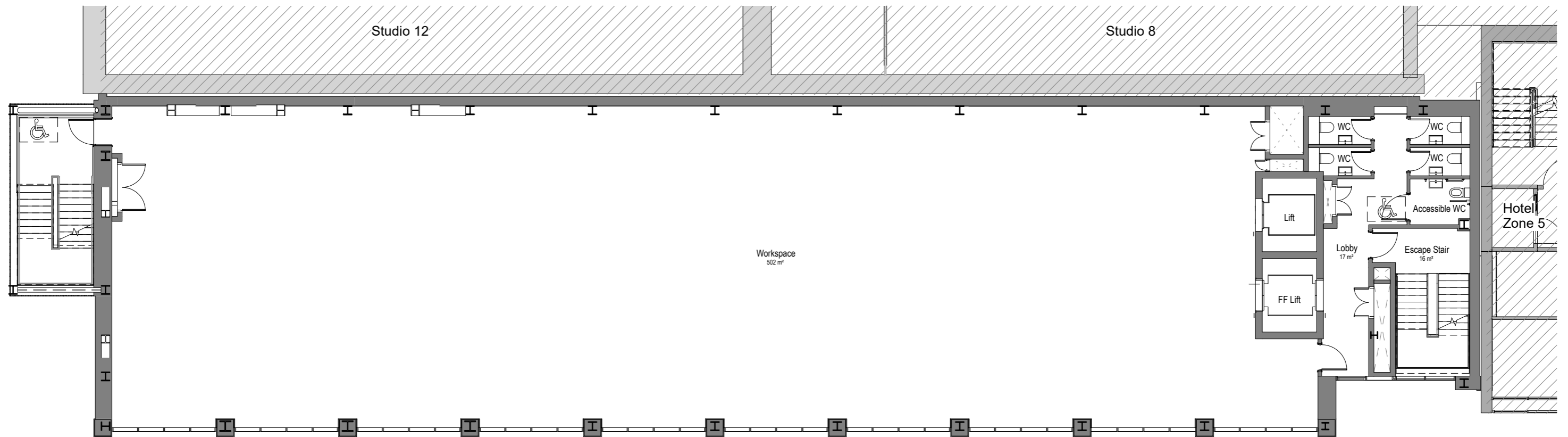


GROUND LEVEL

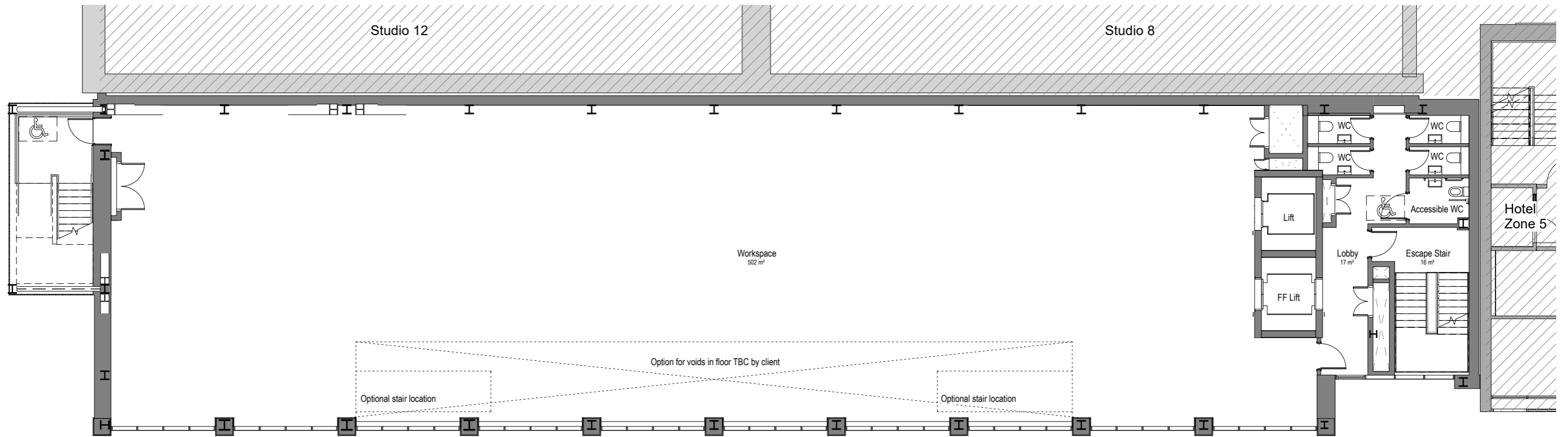


Atherton Street

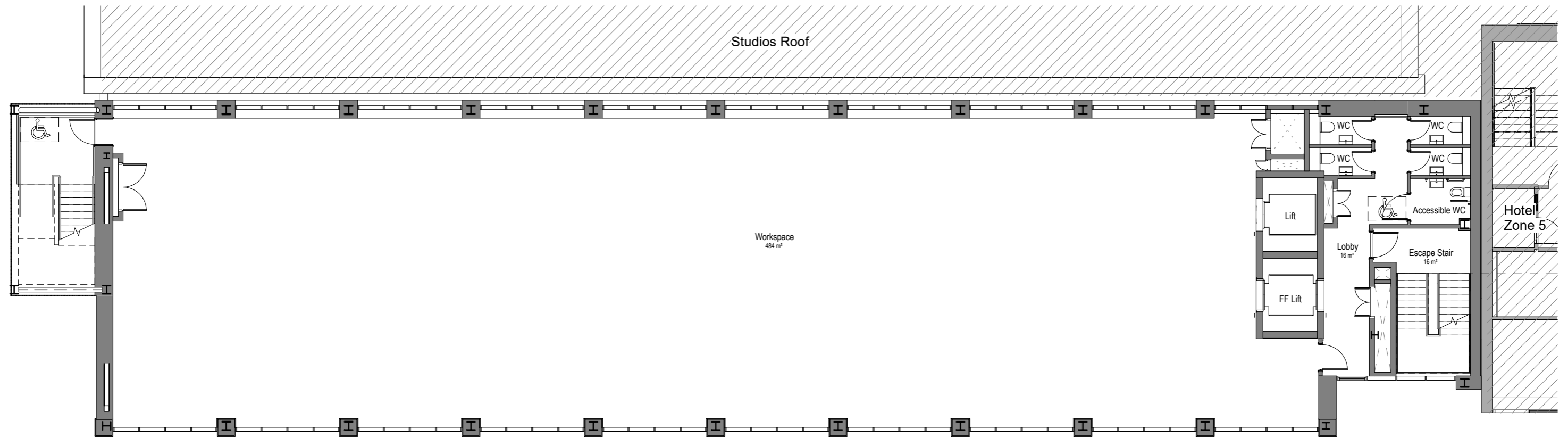
LEVEL ONE



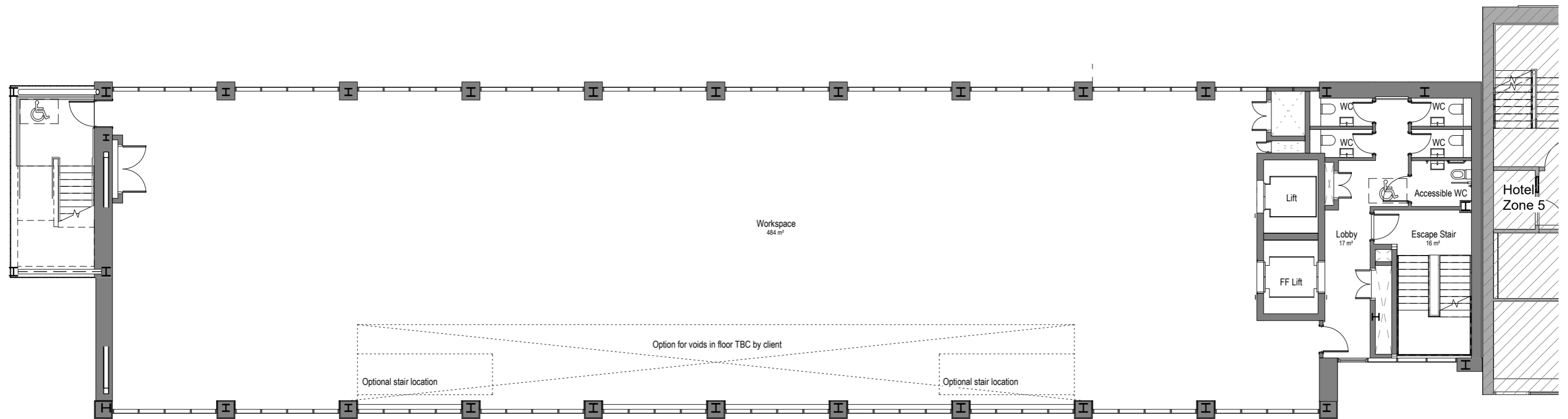
LEVEL TWO



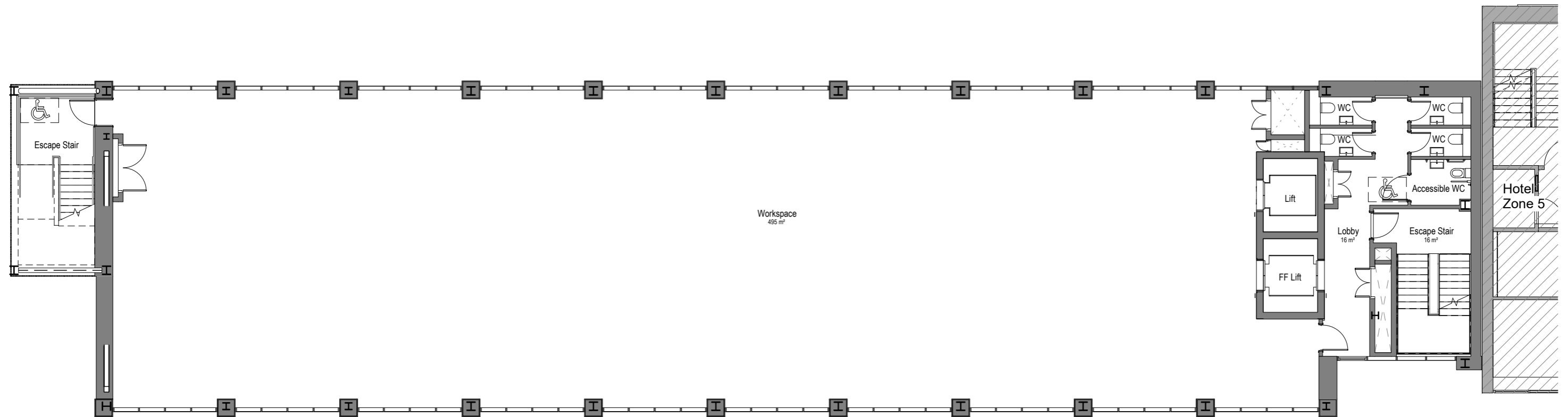
LEVEL THREE



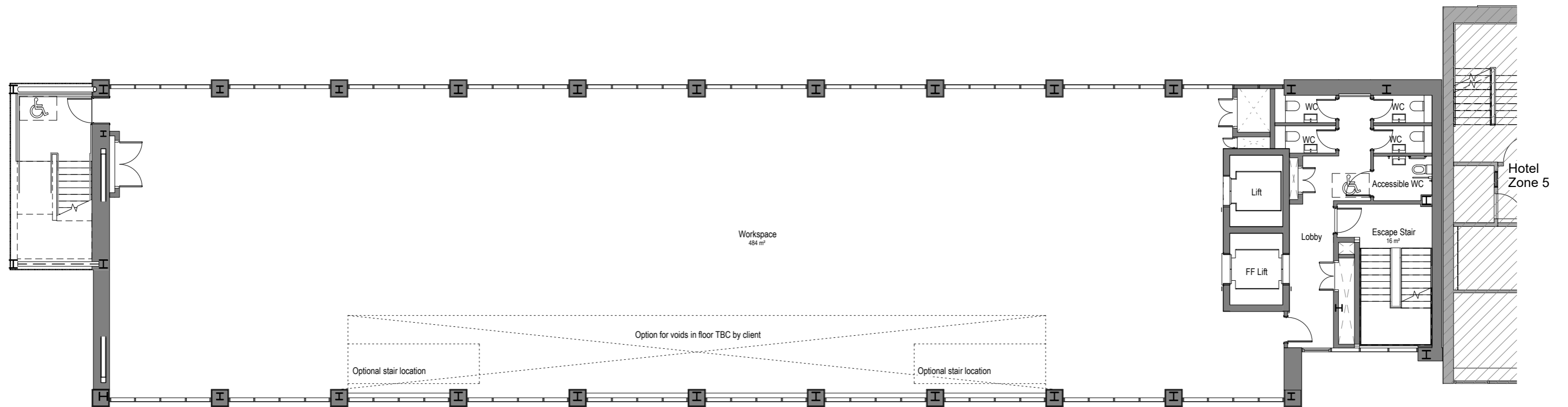
LEVEL FOUR



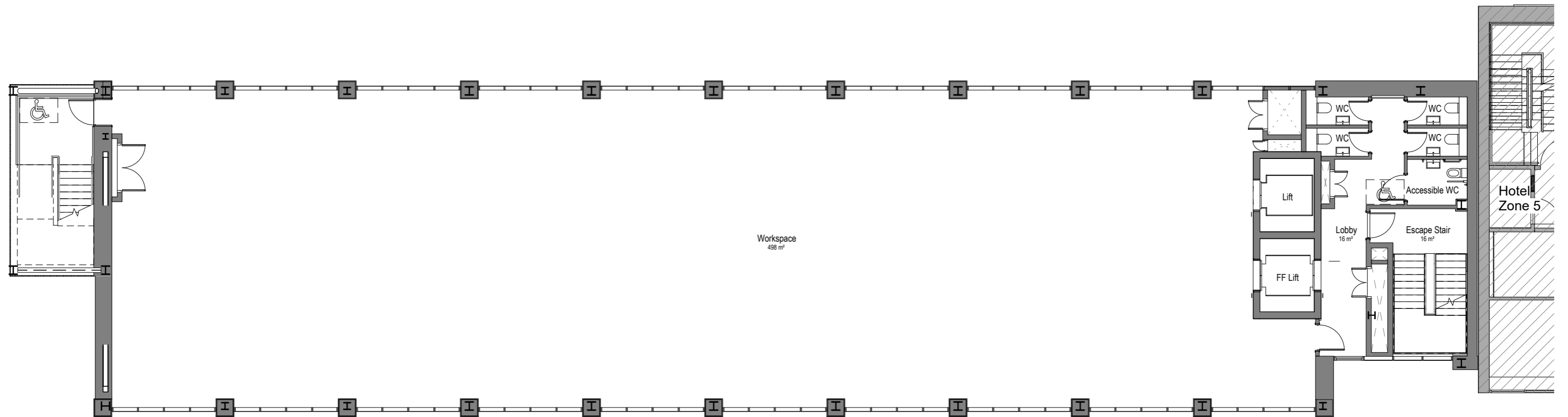
LEVEL FIVE



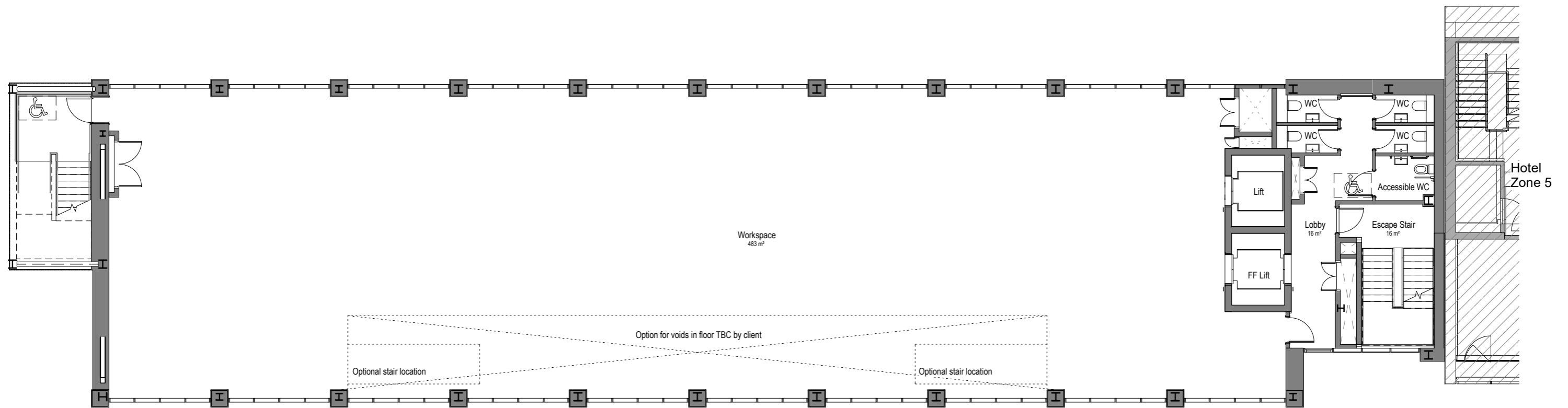
LEVEL SIX



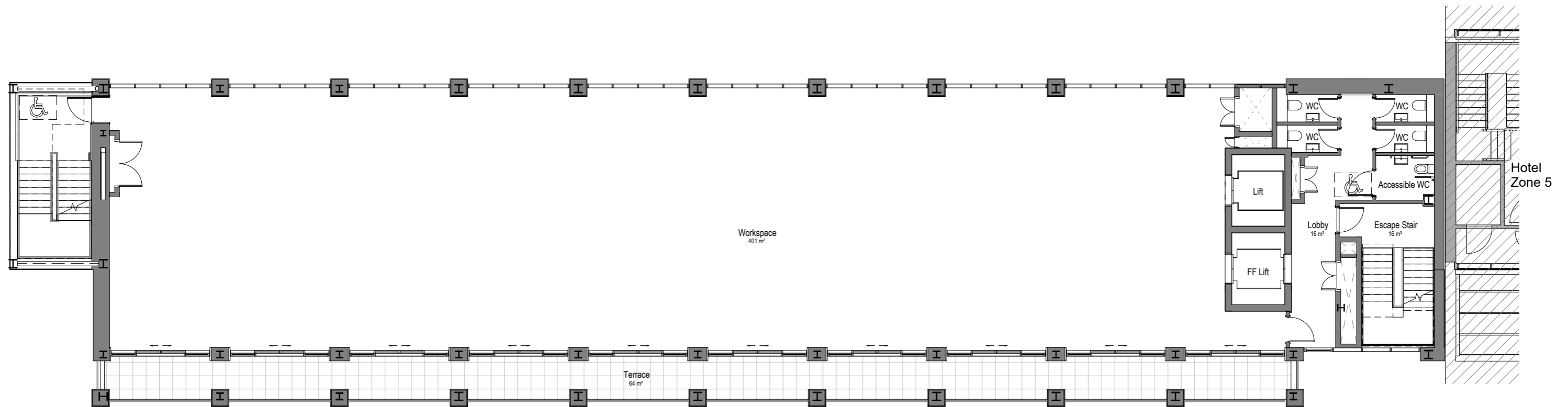
LEVEL SEVEN



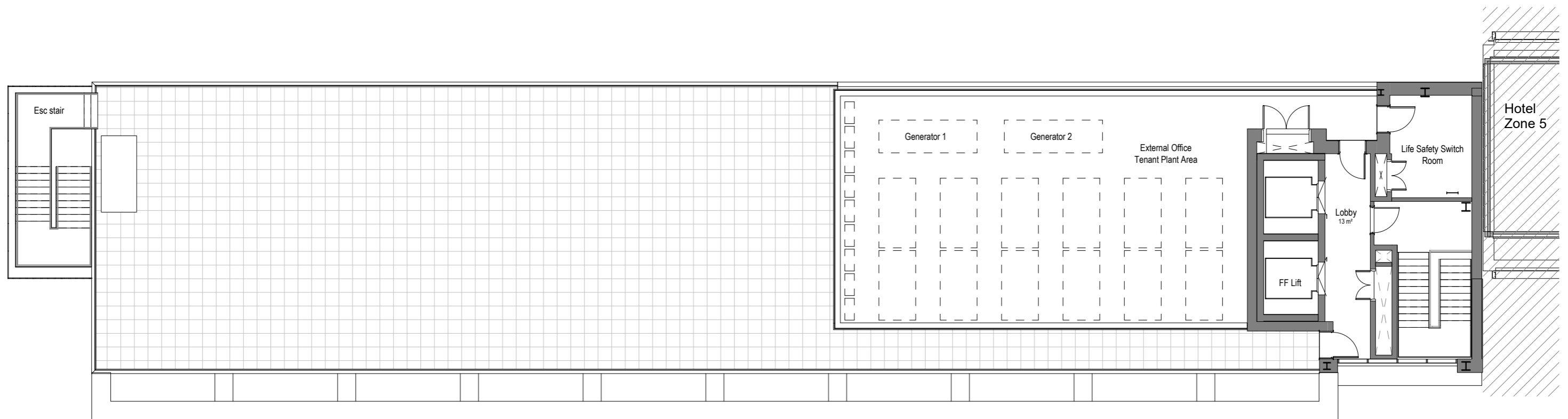
LEVEL 8



LEVEL NINE

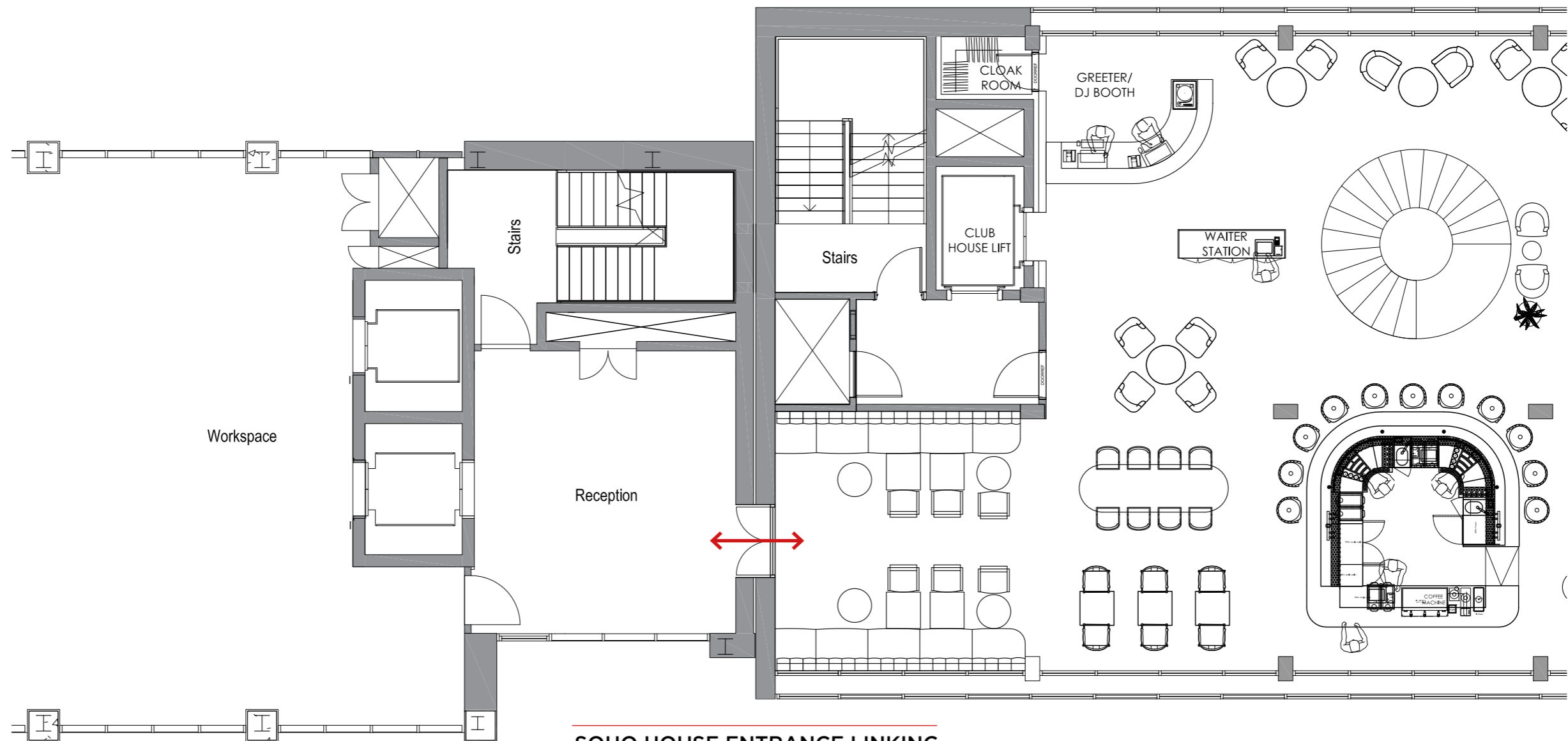


LEVEL TEN



SOHO HOUSE

LEVEL SEVEN LINK OPTION



SOHO HOUSE ENTRANCE LINKING
HOTEL TO WORKSPACE LEVELS



PART OF
ENTERPRISE
CITY
CONNECT
COLLABORATE
CREATE

ENTERPRISE CITY®

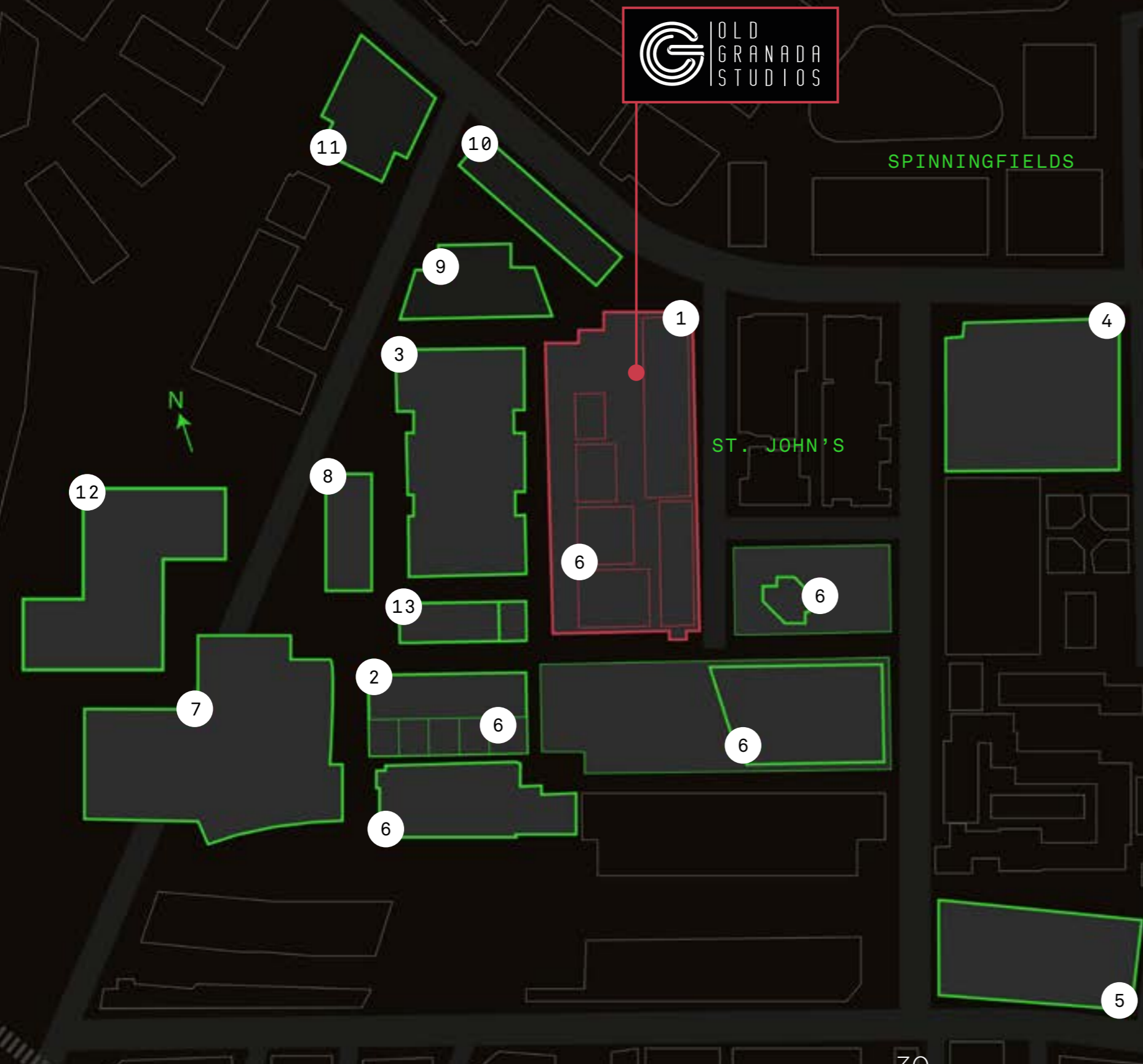
THE FUTURE OF MODERN INDUSTRY: A MEDIA, TECH AND CREATIVE CLUSTER

Old Granada Studios forms a key part of Enterprise City - an inspirational new district of the city, with exceptional workspaces, inspiring cultural spaces, and bespoke city centre living. It's a media, tech and creative cluster designed to connect people and businesses, encourage collaboration, and create success through expert place-making.



CGI view of Enterprise City with Old Granada Studios in centre.

ENTERPRISE CITY



ENTERPRISE CITY

1. OLD GRANADA STUDIOS
[Mollies Motel & Soho House Group | Studio Gallery workspace | Cube Space]
2. BONDED WAREHOUSE
[Department | Tech Nation accelerator hub | Bonded Underground production studios - Manchester Studios]
3. MANCHESTER GOODS YARD
[Booking.com]
4. THE ABC BUILDINGS
[The Farm | Everyman Cinemas | Enterprise workspace | ABC Works | ABC studio workspace Manchester Studios]
5. CAMPFIELD YARD
[Production studios - Manchester Studios | Enterprise workspace]
6. MANCHESTER STUDIOS
[The Breeze Studio & Gardens | Stage One | Stage Two | Bonded Underground | Old Granada Studios 2, 6, 8, 12]
7. THE FACTORY
[Arts, culture and performance venue for Manchester International Festival]
8. NICKEL & DIME
[Bespoke modern co-living units]
9. THE NORTHLIGHT
[Enterprise workspace]
10. GLOBE & SIMPSON
[WPP | MediaCom | Wavemaker | Code | Cheetham Bell]
11. RIVERSIDE TOWER
[Enterprise workspace]
12. ENTERPRISE CITY CAMPUS
[Enterprise workspace | retail & leisure]
13. N°.1 GRAPE STREET
[Enterprise workspace]



Manchester



CONTACT

LONDON
7-8 Savile Row
London
W1S 3PE
T: 020 7758 4000

MANCHESTER
No.1 Spinningfields
Manchester
M3 3EB
T: 0161 834 8640

ENTERPRISE CITY® is a registered trademark of Allied London.

Misrepresentation Act. Allied London gives notice that (1) These particulars are a general outline only, for the guidance of prospective investors, purchasers or tenants, and do not constitute the whole or any part of an offer or contract; (2) Allied London cannot guarantee and accepts no liability whatsoever for the accuracy of any description, dimensions, references to condition, necessary permissions for use and occupation and other details contained herein and prospective purchasers or tenants must therefore not rely on them as agent, advisor or other representative statement of fact or representations and must satisfy themselves as to their accuracy; (3) No employee of Allied London has any authority to make or give any representations or warranty or enter into any contract whatever in relation to the property; (4) Rents quoted in these particulars may be subject to VAT in addition and (5) Allied London will not be liable, in negligence or otherwise, for any loss arising from the use of these particulars, (6) Space planning contained in this brochure is indicative only and may require modifications to the building design; (7) All floor plans are not to scale and are for identification purpose only and (8) all CGIs are indicative of the building and site only and are not an exact representation of the completed building. Design by Allied London 11/2019.

ENTERPRISE CITY®

ST. JOHN'S

